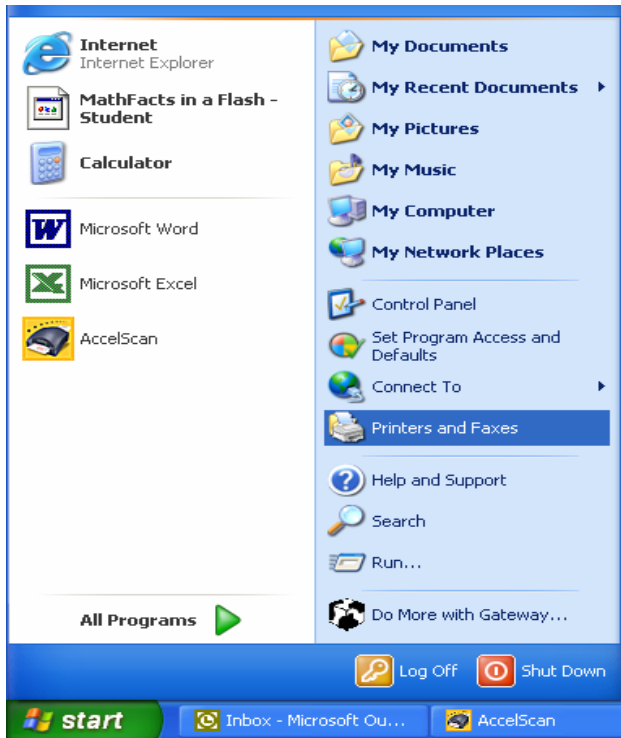
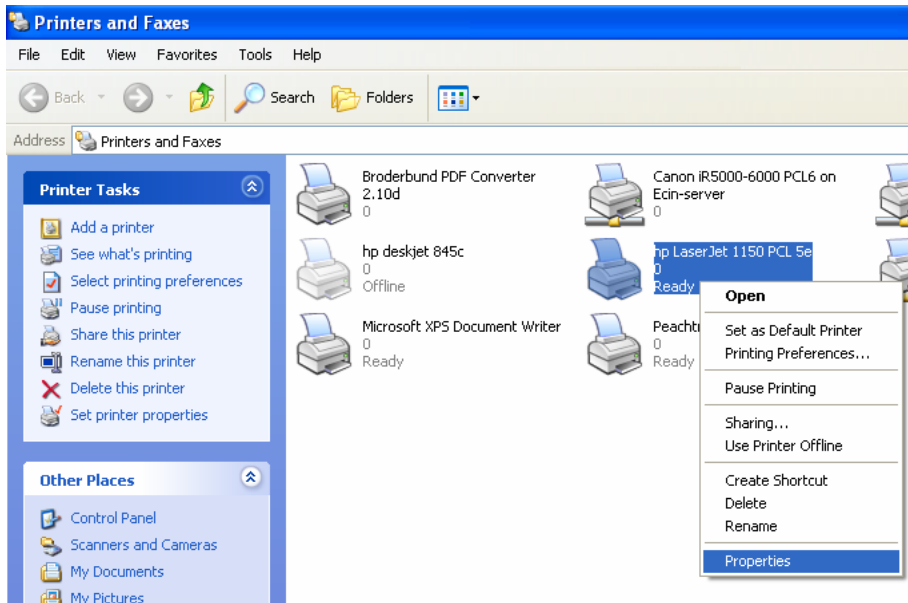


Instructions for Fixing the 1150 LaserJet Duplicate Printing Problem

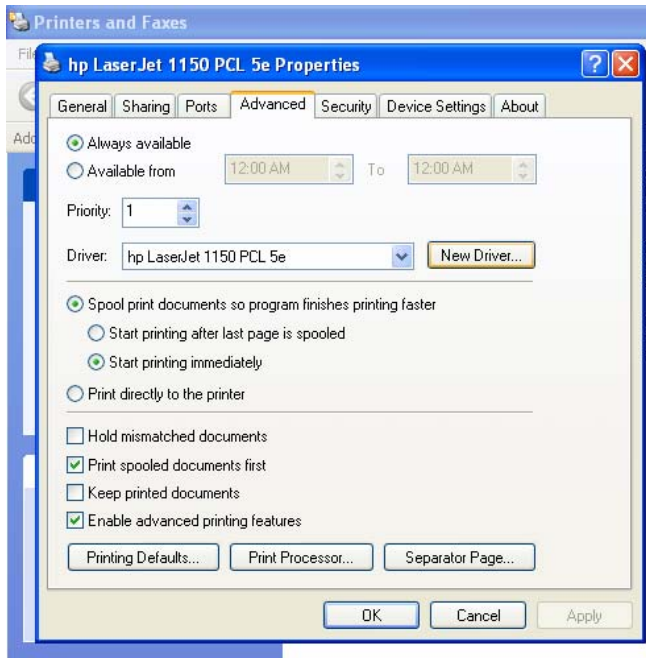
1. Left click Start
2. Left click Printers and Faxes



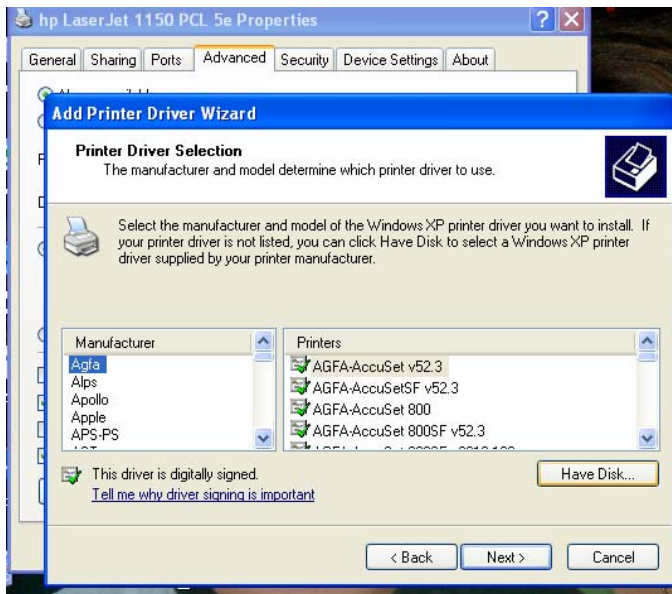
3. Right click on the HP LaserJet 1150 PCL 5e printer
4. Left click on properties



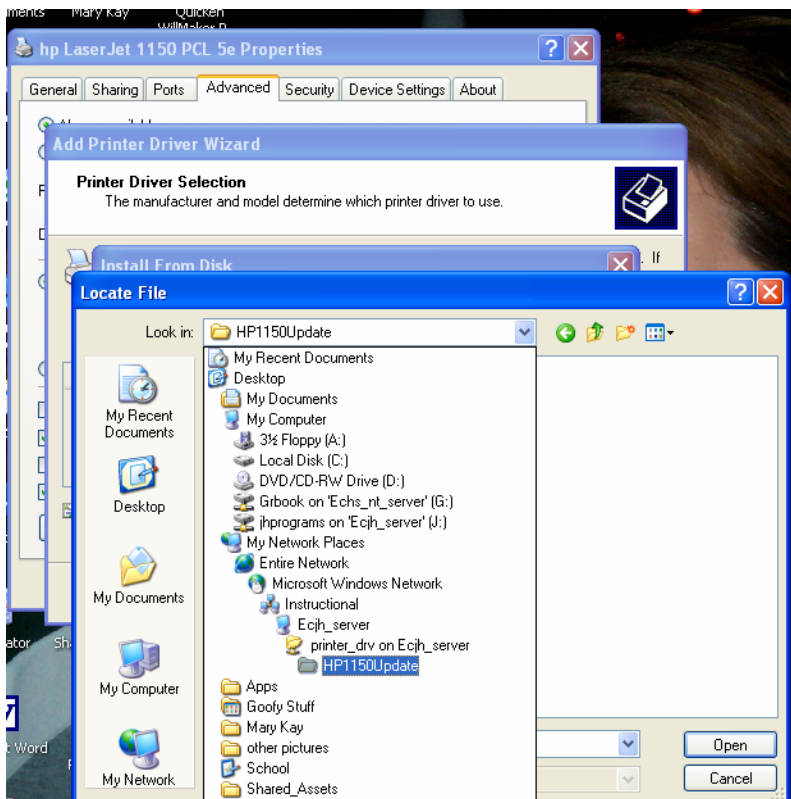
5. Left click on the advanced tab
6. Left click on the new driver button



7. Left click next on the add printer driver wizard
8. Left click have disk



9. Left click browse on the install from disk
10. Left click on the drop down menu for look in
11. Left click My Network Places
12. Double click on Entire Network, Microsoft Windows Network, Instructional, ECjh_server, printer_drv_on_ECjh_server, HP1150Update



13. Left click Open
14. Left click OK
15. Left click Next
16. Left click Finish